

## **Product Release Notes**

### **GRAMS Envision 2.1**

---

© 2013 Thermo Fisher Scientific Inc. All rights reserved.

No part of this publication may be reproduced without the prior written permission of Thermo Fisher Scientific Inc.

# Contents

Introduction.....	3
Purpose.....	3
Inventory of Materials .....	3
Testing Information .....	4
Primary Testing Platform .....	4
Secondary Testing Platform .....	4
Tertiary Testing Platform .....	4
New/Modified Functionality .....	5
Windows 7 Explorer Enhancements.....	6
Enhanced 3D Display Modes.....	7
Unit Conversion and Selection .....	8
User-Specified Instrument Data File Conversion .....	9
Direct Links to Chromeleon and Empower .....	9
Bulk Conversion of Instrument Data Files .....	10
Updated Instrument Data File Converters .....	10
Fixed Defects .....	11
Known Defects .....	14
Converter Support.....	15

# Introduction

## Purpose

The objective of the release notes is to describe new and revised functionality in this version of GRAMS Envision, as well as platform combinations used in formal testing, fixed defects and known defects.

## Inventory of Materials

The GRAMS Envision 2.1 installation kit includes the following items:

- GRAMS Envision 2.1 setup executable
- GRAMS Converters 9.2.4 installation package
- Revised user manuals:
  - GRAMS Envision Installation Guide
  - GRAMS Envision User Guide
  - GRAMS Envision Welcome Guide
- Release Notes

# Testing Information

The following platform combinations were used in testing.

## Primary Testing Platform

Platform	Operating System or Application	Version	Role (Configuration)
Intel Core i5 3.1 GHz 4 GB RAM	Microsoft Windows 7 Internet Explorer	Enterprise Edition SP2 x64 8.0	Workstation

## Secondary Testing Platform

Platform	Operating System or Application	Version	Role (Configuration)
Intel Core 2 3.0 GHz 4 GB RAM	Microsoft Windows Server 2008 Thermo Web Access	Enterprise Edition R2 x64 4.0.1 SP5	Application Server
Intel Core 2 3.0 GHz 4 GB RAM	Microsoft Windows 7 Internet Explorer	Standard Edition SP2 x32 7.0	Web Access Client

## Tertiary Testing Platform

Platform	Operating System or Application	Version	Role (Configuration)
AMD Athlon 64 X2 2.0 GHz 2 GB RAM	Microsoft Windows 7 Internet Explorer	Professional x64 9.0	Workstation

## New/Modified Functionality

With GRAMS Envision 2.1, you will be able to search for, thumbnail and preview more data formats than ever before, and then investigate them in many more ways.

Envision 2.1 has the following new features:

- Windows 7 Explorer enhancements:
  - Full text searching of GAML and SPC format files.
  - Thumbnail icons of each spectrum.
  - Live preview of each spectrum or chromatogram.
- Enhanced 3D display modes – with axis swapping and multiple surface styles
- Unit Conversion to allow disparate data to be overlaid on a single trace view.
- Automatic or manual unit selection for data with arbitrary axes.
- User-specified conversion for 180+ formats (in addition to Smart Convert).
- Direct digital links to Thermo Scientific Dionex Chromeleon 6.8 and Waters Empower 3.
- GAML Convert tool – for bulk conversion of instrument data files.
- Updated converters – including Agilent ChemStation B.

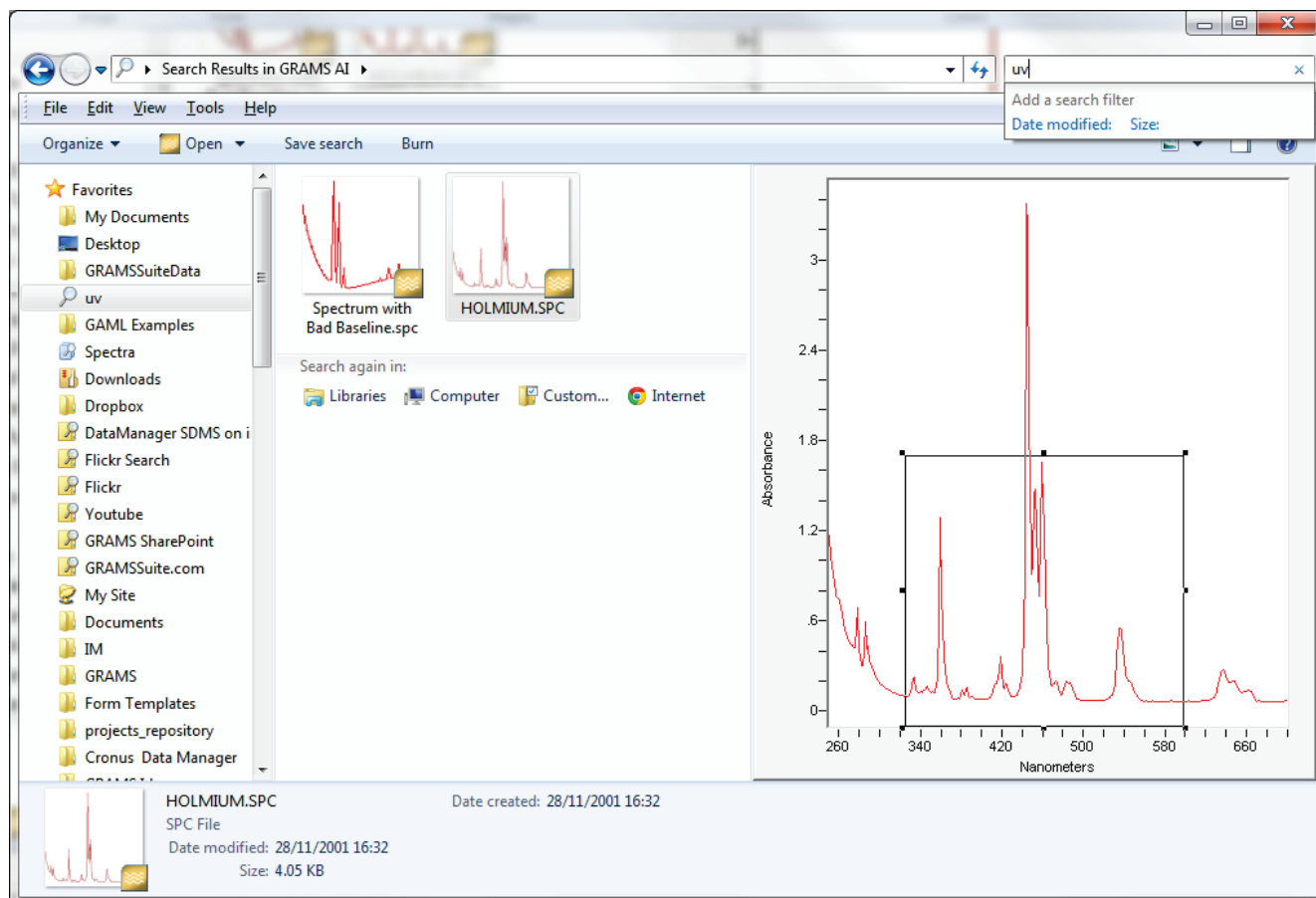
More details on some of these new features are given below. For details of specific fixed defects, see the *Fixed Defects* section.

We also encourage you to open an HTML Viewer inside Envision. It will take you initially to its default page, <http://gaml.org/envision> – here you will find Envision resources, such as “what’s new”, overview training videos, and example data files. You can also sign up, from this page, to find out more about interesting new applications and developments within the GRAMS Suite.

## Windows 7 Explorer Enhancements

Desktop searching of GAML and SPC files has been integrated into the operating system, allowing you to rapidly find files of interest based on their contents – not just their names.

Once you find the files, you will be able to see the traces they contain as a thumbnail view, and then select individual files in the Windows Explorer to access a live preview, complete with zoom function.



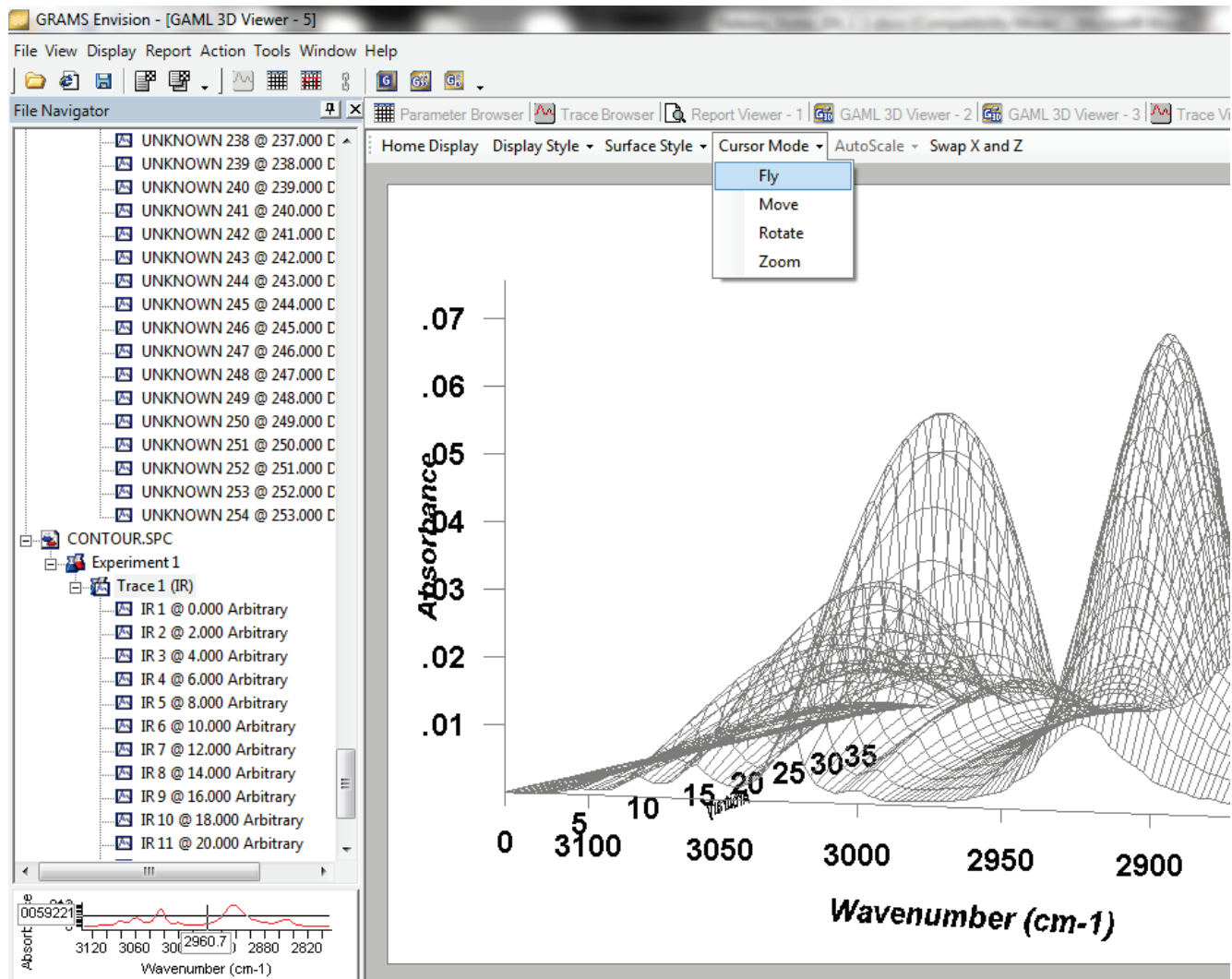
### **Windows 7 Explorer showing thumbnail icons, live preview and full text search**

You can do all of this anywhere within Windows – from the **Start** menu, in Windows Explorer, or inside Envision's **File > Open** window. Search folders can be created which will be constantly updated with, for instance, all SPC files created by a specific user or instrument.

**Note** These enhancements also work for Windows Vista.

## Enhanced 3D Display Modes

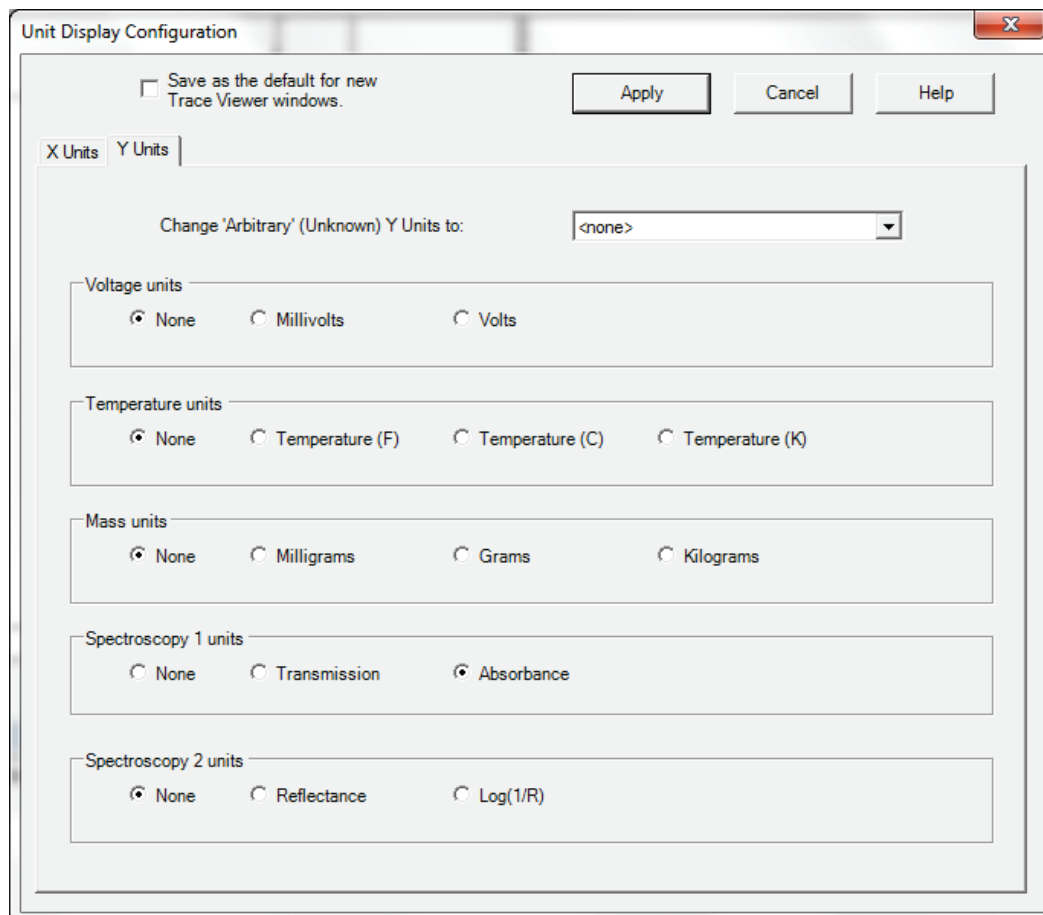
Once you have found and selected the data you wish to view, you are able to invoke more 3D viewing capability than ever before – we have added axis switching, new surface styles and cursor modes.



**GAML 3D Viewer showing Cursor Mode options and Wireframe surface style**

## Unit Conversion and Selection

In many cases, you may have data from multiple sources that each uses a different scale. In order to allow these data to be viewed simultaneously, we have added a unit conversion capability to the Trace Viewer. Traces can be converted manually or an automated rule may be applied to convert all traces of a specific type (even those undefined "arbitrary" traces) to a standardized unit.

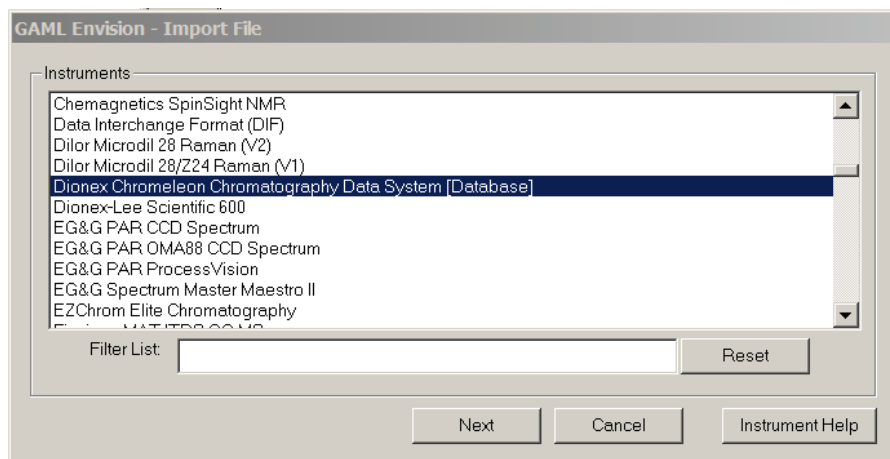


**Unit Display Configuration window**



## User-Specified Instrument Data File Conversion

If you know what instrument produced your data, you can import data files using the new **File > Import (by Instrument Type)** option. This allows you to specify an instrument, from the list of all installed instrument data file converters, before selecting your data files.



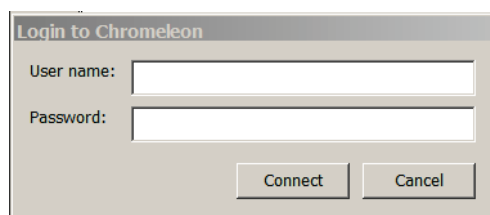
### *List of instruments when importing a data file*

**Note** This is in addition to Smart Convert functionality, and can be used if Smart Convert fails to successfully identify the instrument used to create a data file.

## Direct Links to Chromeleon and Empower

We have enhanced our import capabilities to allow data to be pulled from Chromatography "database" systems, such as Dionex Chromeleon and Waters Empower.

When using the new **File > Import (by Instrument Type)** option to import data, the list of instruments you can select includes these database systems, which are appended with "[Database]". If you select one of these, an additional dialog box allows you to specify login details.

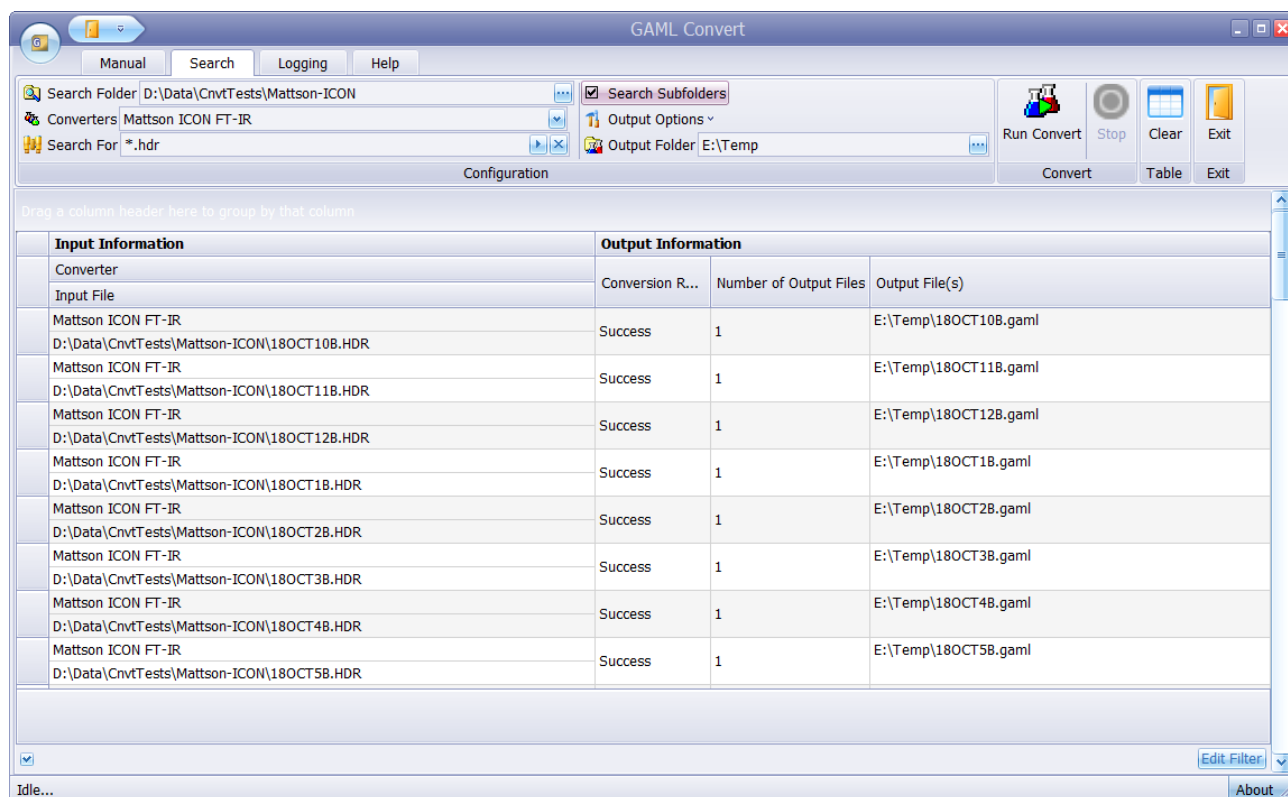


### *Specifying Chromeleon login details when importing data*

When this capability is coupled to a server with the Thermo Web Access Suite (our multi-user remote web access tool), any licensed user can access remote data, via the browser, as rapidly as if they were sitting in the data center.

## Bulk Conversion of Instrument Data Files

For those with a need to bulk convert instrument data files to a neutral XML format, Envision ships with a separately licensed "GAML Convert" tool. This is capable of "walking" through a specified directory structure and automatically converting its contents into GAML XML files that preserve as much of the instrument metadata as is exposed by the vendor, as well as its trace information.



### GAML Convert tool

For information on the platform-neutral GAML format, see <http://gaml.org>.

## Updated Instrument Data File Converters

The release also provides updated 64-bit compatible converters for Agilent ChemStation B, ASD, Bomem, Digilab, Mattson, PE Nelson, Sadtler, Temet and Waters instruments – see the *Converter Support* table, at the end of this document.

## Fixed Defects

The following list details the software changes (defects) that have been implemented in this product release.

Pivotal Issue Number	Description
9929	<p>IR-GAML-0000016: Enhance Envision command line processing.</p> <p>The Envision command line processing should be enhanced to provide error messages for syntax errors. Currently, invalid command lines are ignored and Envision opens with an empty window.</p>
10788	<p>IR-GAML-0000116: Masslynx PDA trace intensities do not match customer raw data.</p>
20509	<p>IR-GAML-0000105: GAMLIO identifies TraceType incorrectly.</p> <p>If a GAML file contains two "TraceArrays" (i.e. XData elements) in one trace, the TraceType code can incorrectly identify the type. If the technique is CHROM, the type should be traceXYY.</p>
20758	<p>IR-GAML-0000103: Peakpro Retention Time error.</p> <p>PeakPro injections that have been processed with a system suitability program have a different format. This results in the peak labels losing their references when imported into Atlas.</p>
29626	<p>IR-GAML-0000100: Unhandled exception has occurred while saving the Trace node of a GAML file.</p> <p>When user opens the saved Trace node file with GRAMS Envision, it is observed that this file is added as a root node of the file navigator and, if user tries to save this file by right click menu of the Root node with same "Name" and same "Save as type" (.spc) by replacing the old file, an unhandled exception occurs in the application.</p>
29629	<p>IR-GAML-0000099: Unhandled exception has occurred while saving a GAML file.</p> <p>When trying to save a GAML file, if user enters the file name with .doc extension (e.g. "Adhoc issue.doc") and clicks [Save], an unhandled exception occurs in the application.</p>
29632	<p>IR-GAML-0000096: Improper behavior is observed while using the &lt;Ctrl+C&gt; keys in Envision.</p> <p>When the user tries to copy the selected row from the Peak Table viewer window using the &lt;Ctrl+C&gt; keyboard shortcut, it is observed that &lt;Ctrl+C&gt; triggers the Main menu's "File &gt; Close" option, which closes the currently open file, instead of the Main Window menu's "Edit &gt; Copy" option.</p>

<b>Pivotal Issue Number</b>	<b>Description</b>
29634	<p>IR-GAML-0000094: Line Properties "Style" selection is not working properly.</p> <p>In Line Properties, if the only the "Style" is changed to something other than Solid (i.e. DashDot), it is properly displayed. However if you then change the "Width" while keeping the Style something other than Solid, the graph displays the default Solid instead of any other style.</p>
29635	<p>IR-GAML-0000093: An Unhandled Exception is displayed when user tries to submit URL as "http://" in HTML Viewer window.</p> <p>On opening any GAML file and HTML viewer one after one, if user changes the window view from tabbed view to horizontal view and on trying to submit the URL address of HTML viewer as "http://", it is observed that an unhandled exception is displayed.</p> <p>Note that the issue is also observed when user is in the vertical view of the window.</p>
29720	<p>IR-GAML-0000082: Envision crashes when GAML 3D Viewer is opened if DEP is turned on for the application.</p> <p>If Data Execution Prevention (DEP) is turned on for all programs on the system, Envision will crash if the GAML 3D Viewer is opened.</p>
30615	<p>IR-GAML-0000080: Envision fails to launch Spectral ID from the "link viewer" window.</p> <p>The installation path of GRAMS changed with release 9.0. The path was fixed in the main Envision windows. However, it was not updated in the code that handles the "link viewer".</p>
32321	<p>Converting a J-Camp file that contains a line greater than 128 characters long causes the converter to crash.</p> <p>A customer reported an issue converting a J-Camp file that had an entry in the AUDIT TRAIL that was fairly long. This caused the converter to crash.</p>
33911	<p>The ASD Indico converter has a few issues that make it difficult for the customer to use.</p> <p>The instrument vendor has requested the following changes to this new converter:</p> <ol style="list-style-type: none"> <li>1. It should ONLY process the file three in the ASD file and ignore the other two.</li> <li>2. The reflectance data should be converted to Log (1/R) and the axis should be labeled appropriately.</li> <li>3. The technique should be NIR (near infrared).</li> </ol>

<b>Pivotal Issue Number</b>	<b>Description</b>
N/A	<p>Converting a GAML file that is missing a CollectDate to SPC incorrectly puts a date of 1889 in the SPC header.</p> <p>When converting a GAML file to SPC, if the collectdate element is missing, the resulting SPC has an invalid date. Note that when opening the GAML file in Envision, and "sending" the trace to GRAMS, this does not happen.</p>
N/A	<p>Envision license settings are not updated when license is changed in "About" box.</p> <p>If a user selects "Help &gt; About GRAMS Envision &gt; Select New License" and changes the license, the application does not update the current settings. The user must exit and restart Envision to apply the new license setting.</p> <p>Also, when a licensing error occurs, the underlying FlexNet error is not displayed in the error message. This makes it difficult to debug license issues.</p>
N/A	<p>Envision incorrectly opens multiple data files.</p> <p>If multiple files are selected when using "File &gt; Open" or "File &gt; Import (by Instrument)", the "GAML-level" nodes are not updated properly. Only the last file is displayed.</p> <p>Also, if any of the GAML nodes are saved to disk, the contents will be the contents of the last file opened.</p>

## Known Defects

The following list contains all known issues with a severity level of 4 or 5, as well as issues with a severity level of 3 identified within this release. The defects are listed with a severity rating where available and a workaround if known.

A complete listing of known issues and Knowledge Base articles can be obtained in the eService Portal by using the following link: <http://eservice.thermo.com/>. You must have a valid and current support contract in order to access this information.

<b>Pivotal Issue Number</b>	<b>Description</b>	<b>Severity</b>
33850	Index tab missing on the Grams Envision Help screen.  During a review, it was discovered that many entries are missing from the Index, and many of the existing entries are incorrect. As a result, the Index tab was turned off, and will be restored in a future release once the underlying issues have been resolved.	3-Moderate

# Converter Support

The following list describes the operating system constraints for each of the file converters delivered with GRAMS Envision 2.1.

Converter Name	Type	Status
AIA/ANDI Chromatography	32-bit (GAML)	Will run on all supported operating systems
AIA/ANDI FT-IR	32-bit	Will run on all supported operating systems
AIA/ANDI Mass Spectrometry	32-bit	Will run on all supported operating systems
ANDO AQ Optical Spectrum Analyzer	32-bit (GAML)	Will run on all supported operating systems
ASCII X,Y (Constant X Spacing)	32-bit (GAML)	Will run on all supported operating systems
ASCII X,Y (High Precision X)	32-bit (GAML)	Will run on all supported operating systems
ASCII X,Y (Variable X Spacing)	32-bit (GAML)	Will run on all supported operating systems
ASCII Y (Single Column)	32-bit (GAML)	Will run on all supported operating systems
ASD Indico	32-bit (GAML)	Will run on all supported operating systems
ASD PSII UV-Vis	16-bit	Will not run on Windows 7 64-bit
ASYST V1.5+ Data File	16-bit	Will not run on Windows 7 64-bit
AVIV UV-Vis/CD	16-bit	Will not run on Windows 7 64-bit
Acorn NMR NUTS	32-bit	Will run on all supported operating systems
Agilent ChemStation (LC/GC/PDA/MS)	32-bit (GAML)	Will run on all supported operating systems
Alton Instruments LS2000	16-bit	Will not run on Windows 7 64-bit
Amersham Bioscience UNICORN	32-bit (GAML)	Will run on all supported operating systems
Analect FT-IR	32-bit	Will run on all supported operating systems
Ando AQ-6312B	16-bit	Will not run on Windows 7 64-bit
Applied Automation Optichrom	16-bit	Will not run on Windows 7 64-bit
Atlas Chromatography Data System	32-bit (GAML)	Will run on all supported operating systems

<b>Converter Name</b>	<b>Type</b>	<b>Status</b>
Beckman DU60 ASCII UV-Vis	16-bit	Will not run on Windows 7 64-bit
Beckman FT1000/2000 FT-IR	16-bit	Will not run on Windows 7 64-bit
Beckman Gold Chromatography	32-bit (GAML)	Will run on all supported operating systems
Beckman Gold Diode Array	16-bit	Will not run on Windows 7 64-bit
Beckman PeakPro Chromatography Data System	32-bit (GAML)	Will run on all supported operating systems
Beckman UV-Vis/Fluorescence	16-bit	Will not run on Windows 7 64-bit
Bio-Rad BioDimension DAD	16-bit	Will not run on Windows 7 64-bit
Bio-Rad Digilab 3200 FT-IR	32-bit (GAML)	Will run on all supported operating systems
Bio-Rad Digilab IMX FT-IR	32-bit (GAML)	Will run on all supported operating systems
Bio-Rad Sadtler IR	32-bit (GAML)	Will run on all supported operating systems
Bomem DA3/DA8 FT-IR	32-bit (GAML)	Will run on all supported operating systems
Brimrose AOTF NIR	16-bit	Will not run on Windows 7 64-bit
Bruker ATS FT-IR (Aspect)	16-bit	Will not run on Windows 7 64-bit
Bruker AXS DIFFRACplus/AT XRD	32-bit	Will run on all supported operating systems
Bruker Aspect NMR	32-bit	Will run on all supported operating systems
Bruker ESP300 ESR	16-bit	Will not run on Windows 7 64-bit
Bruker OPUS FT-IR (OS/2)	32-bit	Will run on all supported operating systems
Bruker UXNMR (X32)	16-bit	Will not run on Windows 7 64-bit
Bruker WIN-NMR	16-bit	Will not run on Windows 7 64-bit
Bruker XWIN-NMR	32-bit (GAML)	Will run on all supported operating systems
Chemagnetics CMX NMR	16-bit	Will not run on Windows 7 64-bit
Chemagnetics SpinSight NMR	32-bit	Will run on all supported operating systems
Data Interchange Format (DIF)	16-bit	Will not run on Windows 7 64-bit
Dilor Microdil 28 Raman (V2)	16-bit	Will not run on Windows 7 64-bit



<b>Converter Name</b>	<b>Type</b>	<b>Status</b>
Dilor Microdil 28/Z24 Raman (V1)	16-bit	Will not run on Windows 7 64-bit
Dionex Chromeleon Chromatography Data System	32-bit (GAML)	Will run on all supported operating systems
Dionex-Lee Scientific 600	16-bit	Will not run on Windows 7 64-bit
EG&G PAR CCD Spectrum	16-bit	Will not run on Windows 7 64-bit
EG&G PAR OMA88 CCD Spectrum	16-bit	Will not run on Windows 7 64-bit
EG&G PAR ProcessVision	16-bit	Will not run on Windows 7 64-bit
EG&G Spectrum Master Maestro II	16-bit	Will not run on Windows 7 64-bit
EZChrom Elite Chromatography	32-bit (GAML)	Will run on all supported operating systems
Finnigan MAT ITDS GC-MS	16-bit	Will not run on Windows 7 64-bit
GBC Spectral UV-Vis	32-bit	Will run on all supported operating systems
GE Omega NMR	16-bit	Will not run on Windows 7 64-bit
GE/Nicolet NMR (1280)	16-bit	Will not run on Windows 7 64-bit
Gilson Unipoint Chrom.	32-bit	Will run on all supported operating systems
Groton Tech. PF1 DAD	16-bit	Will not run on Windows 7 64-bit
Groton Tech. SoloNet DAD	16-bit	Will not run on Windows 7 64-bit
Guided Wave NIR	16-bit	Will not run on Windows 7 64-bit
HP 1040 Diode Array (PAWS)	16-bit	Will not run on Windows 7 64-bit
HP 1090 Diode Array (PAWS)	32-bit (GAML)	Will run on all supported operating systems
HP 8452 Time Scan (DOS)	16-bit	Will not run on Windows 7 64-bit
HP 8452 UV-Vis (DOS)	16-bit	Will not run on Windows 7 64-bit
HP ChemStation Chromatogram	32-bit (GAML)	Will run on all supported operating systems
HP ChemStation Diode Array	32-bit (GAML)	Will run on all supported operating systems
HP ChemStation IRD GC-IR	16-bit	Will not run on Windows 7 64-bit

<b>Converter Name</b>	<b>Type</b>	<b>Status</b>
HP ChemStation MSD GC-MS	32-bit (GAML)	Will run on all supported operating systems
HP LAS Converter	32-bit (GAML)	Will run on all supported operating systems
Hitachi D-7000 HPLC System	32-bit (GAML)	Will run on all supported operating systems
Hitachi R-1200/1100 NMR	32-bit	Will run on all supported operating systems
Hitachi R-1500 NMR	16-bit	Will not run on Windows 7 64-bit
Horiba FT-IR	16-bit	Will not run on Windows 7 64-bit
IBM 9420/9430 UV-Vis	16-bit	Will not run on Windows 7 64-bit
IBM IR30 FT-IR	16-bit	Will not run on Windows 7 64-bit
ISA PRISM Raman	16-bit	Will not run on Windows 7 64-bit
ISA SPEX Raman	16-bit	Will not run on Windows 7 64-bit
ISA SpectraMax Raman	16-bit	Will not run on Windows 7 64-bit
Interspectrum/Spectrolab PFS2000	32-bit	Will run on all supported operating systems
JCAMP-DX Data File	32-bit (GAML)	Will run on all supported operating systems
Jasco J-600 CD	16-bit	Will not run on Windows 7 64-bit
Jasco J-700 CD	16-bit	Will not run on Windows 7 64-bit
Jasco Spectra Manager	32-bit (GAML)	Will run on all supported operating systems
Jeol GX/EX NMR	32-bit	Will run on all supported operating systems
Jeol Generic NMR	32-bit	Will run on all supported operating systems
Jeol WinSpec FT-IR	32-bit	Will run on all supported operating systems
Kontron DS-450 Chromatogram	16-bit	Will not run on Windows 7 64-bit
Kratos MACH3 GC-MS	16-bit	Will not run on Windows 7 64-bit
LDC Analytical SM5000 DAD	16-bit	Will not run on Windows 7 64-bit
LTI SpectraMetrix/PowerScan	16-bit	Will not run on Windows 7 64-bit
LabControl SPECTACLE File	32-bit	Will run on all supported operating systems
LeCroy 7200 Oscilloscope	16-bit	Will not run on Windows 7 64-bit

<b>Converter Name</b>	<b>Type</b>	<b>Status</b>
LeCroy 8818A Digitizer/Catalyst	16-bit	Will not run on Windows 7 64-bit
LeCroy 94xx Oscilloscopes	16-bit	Will not run on Windows 7 64-bit
Linear Instruments DAD	16-bit	Will not run on Windows 7 64-bit
Lotus 123 Worksheet (V1.0a)	16-bit	Will not run on Windows 7 64-bit
Lotus 123 Worksheet (V2.0)	16-bit	Will not run on Windows 7 64-bit
Mattson FIRST/WinFIRST FT-IR	16-bit	Will not run on Windows 7 64-bit
Mattson ICON FT-IR	32-bit (GAML)	Will run on all supported operating systems
Micromass MassLynx Chromatography Data System	32-bit (GAML)	Will run on all supported operating systems
NIRSystems NSAS/Vision	32-bit	Will run on all supported operating systems
NIST MSP Text	32-bit	Will run on all supported operating systems
Nicolet PCIR FT-IR	16-bit	Will not run on Windows 7 64-bit
Nicolet SX/DX FT-IR (1280)	16-bit	Will not run on Windows 7 64-bit
Oriel DOS InstaSpec	16-bit	Will not run on Windows 7 64-bit
Oriel Runes II	16-bit	Will not run on Windows 7 64-bit
Otsuka Diode Array	16-bit	Will not run on Windows 7 64-bit
PE Nelson 2600 Chromatogram	32-bit (GAML)	Will run on all supported operating systems
PE Nelson Access*Chrom	32-bit (GAML)	Will run on all supported operating systems
PE Nelson TurboChrom (V3.3)	16-bit	Will not run on Windows 7 64-bit
PE Sciex Analyst (WinNT LC-MS)	32-bit (GAML)	Will run on all supported operating systems
Perkin Elmer PIONIR	16-bit	Will not run on Windows 7 64-bit
Perkin Elmer TurboChrom	32-bit (GAML)	Will run on all supported operating systems.
Perkin-Elmer 7000 FT-IR & UV-Vis	16-bit	Will not run on Windows 7 64-bit
Perkin-Elmer IR Data Manager	16-bit	Will not run on Windows 7 64-bit
Perkin-Elmer PC137 SAM	16-bit	Will not run on Windows 7 64-bit

<b>Converter Name</b>	<b>Type</b>	<b>Status</b>
Perkin-Elmer Spectrum/Winlab	32-bit (GAML)	Will run on all supported operating systems
Perkin-Elmer TurboMass LC/GC-MS	32-bit	Will run on all supported operating systems
Perkin-Elmer UV/FL Data Manager (B)	16-bit	Will not run on Windows 7 64-bit
Perkin-Elmer UV/FL Data Manager	16-bit	Will not run on Windows 7 64-bit
Perten Instruments PerCon NIR	32-bit	Will run on all supported operating systems
Pharmacia LKB Gelscan XL	16-bit	Will not run on Windows 7 64-bit
Phillips IR/40 FT-IR	16-bit	Will not run on Windows 7 64-bit
Polymer Laboratories Cirrus GPC/Triple Detection Converter	32-bit (GAML)	Will run on all supported operating systems
Princeton Instruments CCD	16-bit	Will not run on Windows 7 64-bit
Radiomatic FLO-One ASCII File	16-bit	Will not run on Windows 7 64-bit
SLM Aminco 3000 UV-Vis	16-bit	Will not run on Windows 7 64-bit
SLM Aminco Universal File	16-bit	Will not run on Windows 7 64-bit
Shimadzu HyperIR FT-IR	32-bit	Will run on all supported operating systems
Shimadzu QP5000 GC-MS	16-bit	Will not run on Windows 7 64-bit
Shimadzu UV160/265	16-bit	Will not run on Windows 7 64-bit
Siemens AXS DIFFRACplus/AT XRD	32-bit	Will run on all supported operating systems
Spectra Physics ChromStation	16-bit	Will not run on Windows 7 64-bit
Spectra Physics DAD	16-bit	Will not run on Windows 7 64-bit
Spectra Physics Memory Module	16-bit	Will not run on Windows 7 64-bit
Spectronic SLM-Aminco Bowman 2	32-bit (GAML)	Will run on all supported operating systems.
Stanford Research SR265	16-bit	Will not run on Windows 7 64-bit
TA Instruments Universal Analysis (DSC & TGA only)	32-bit	Will run on all supported operating systems

<b>Converter Name</b>	<b>Type</b>	<b>Status</b>
Target Chromatography Analysis Software	32-bit (GAML)	Will run on all supported operating systems
TechMag MacNMR	16-bit	Will not run on Windows 7 64-bit
Teknivent GC-MS	16-bit	Will not run on Windows 7 64-bit
Telos Labs Spectrogram FT-IR	16-bit	Will not run on Windows 7 64-bit
Temet Instruments FT-IR	32-bit (GAML)	Will run on all supported operating systems
Thermo Elemental Solaar Converter	32-bit (GAML)	Will run on all supported operating systems
Thermo Finnigan Xcalibur Converter	32-bit (GAML)	Will run on all supported operating systems
Thermo Fisher ASCII File with Header	32-bit (GAML)	Will run on all supported operating systems
Thermo Fisher GAML	32-bit (GAML)	Will run on all supported operating systems
Thermo Fisher IEEE 32-bit Float File	16-bit	Will not run on Windows 7 64-bit
Thermo Fisher SPC	32-bit (GAML)	Will run on all supported operating systems
Thermo LabSystems Multichrom	32-bit (GAML)	Will run on all supported operating systems
Thermo Nicolet Omnic	32-bit (GAML)	Will run on all supported operating systems
Thermo Spectronic Helios	32-bit (GAML)	Will run on all supported operating systems
Tracor Northern TN-6500	16-bit	Will not run on Windows 7 64-bit
Tracor Northern TN-6600	16-bit	Will not run on Windows 7 64-bit
VG Plasma-Quad ICP-MS	16-bit	Will not run on Windows 7 64-bit
Varian Cary UV-VIS-NIR	32-bit (GAML)	Will run on all supported operating systems
Varian Cary UV-Vis (OS/2)	16-bit	Will not run on Windows 7 64-bit
Varian Chemagnetics NMR	32-bit	Will run on all supported operating systems
Varian Galaxie /JMBS DIAMIR/Bio-Tek KromaSystem 3000	32-bit (GAML)	Will run on all supported operating systems
Varian Saturn 3 GC-MS	16-bit	Will not run on Windows 7 64-bit

<b>Converter Name</b>	<b>Type</b>	<b>Status</b>
Varian Saturn 5 GC-MS	32-bit	Will run on all supported operating systems
Varian Star GC	32-bit	Will run on all supported operating systems
Varian VNMR	32-bit	Will run on all supported operating systems
Varian XL/XR/Gemini NMR	16-bit	Will not run on Windows 7 64-bit
Waters 990 DAD	16-bit	Will not run on Windows 7 64-bit
Waters Maxima 820 Chromatogram	32-bit (GAML)	Will run on all supported operating systems
Zeiss ASCII File	16-bit	Will not run on Windows 7 64-bit